

LED T8 Tube - Microwave Motion Sensor



LT205060/mb/ms-06v05, LT205120/mb/ms-12v05, LT205180/mb/ms-15v05, LT205200/mb/ms-18v05, LT205060/mb/ms/sp-06v05, LT205120/mb/ms/sp-12v05, LT205180/mb/ms/sp-15v05, LT205060/mb/ms-06v01, LT205120/mb/ms-12v01, LT205180/mb/ms-15v01, LT205200/mb/ms-18v01, LT205060/mb/ms/sp-06v01, LT205120/mb/ms/sp-12v01, LT205180/mb/ms/sp-15v01

Instruction Manual

TECHNICAL SPECIFICATION

Model Number	Wattage	Voltage	Frequency	Rated Current	Dimensions	Energy Class	Operating Temperature	Power Factor
LT205060/mb/ms-06v05	6W	220-240V ~	50/60Hz	52mA	L603mm x D28mm	D	-30 C to +55 C	0.5
LT205120/mb/ms-12v05	12W	220-240V ~	50/60Hz	104mA	L1212mm x D28mm	D	-30 C to +55 C	0.5
LT205180/mb/ms-15v05	18W	220-240V ~	50/60Hz	157mA	L1513mm x D28mm	D	-30 C to +55 C	0.5
LT205200/mb/ms-18v05	20W	220-240V ~	50/60Hz	174mA	L1779mm x D28mm	D	-30 C to +55 C	0.5
LT205060/mb/ms/sp-06v05	6W	220-240V ~	50/60Hz	52mA	L603mm x D28mm	D	-30 C to +55 C	0.5
LT205120/mb/ms/sp-12v05	12W	220-240V ~	50/60Hz	104mA	L1212mm x D28mm	D	-30 C to +55 C	0.5
LT205180/mb/ms/sp-15v05	18W	220-240V ~	50/60Hz	157mA	L1513mm x D28mm	D	-30 C to +55 C	0.5
LT205060/mb/ms-06v01	6W	220-240V ~	50/60Hz	29mA	L603mm x D28mm	D	-30 C to +55 C	0.9
LT205120/mb/ms-12v01	12W	220-240V ~	50/60Hz	58mA	L1212mm x D28mm	D	-30 C to +55 C	0.9
LT205180/mb/ms-15v01	18W	220-240V ~	50/60Hz	87mA	L1513mm x D28mm	D	-30 C to +55 C	0.9
LT205200/mb/ms-18v01	20W	220-240V ~	50/60Hz	97mA	L1779mm x D28mm	D	-30 C to +55 C	0.9
LT205060/mb/ms/sp-06v01	6W	220-240V ~	50/60Hz	29mA	L603mm x D28mm	D	-30 C to +55 C	0.9
LT205120/mb/ms/sp-12v01	12W	220-240V ~	50/60Hz	58mA	L1212mm x D28mm	D	-30 C to +55 C	0.9
LT205180/mb/ms/sp-15v01	18W	220-240V ~	50/60Hz	87mA	L1513mm x D28mm	D	-30 C to +55 C	0.9

CAUTIONS

- Read the entire manual carefully before installation and operation.
- Only licensed and qualified electricians are allowed to perform the installation.
- Before the installation or replacement of the lamp, turn it off and allow it to cool down. Heat-resistant gloves are mandatory when handling the tube.
- The LED T8 Tube can be used to replace the traditional fluorescent T8 Tube with G13 lamp base and corresponding length mentioned in the above table.
- MEGAMAN® LED T8 Tube cannot work with electronic ballast.
- The LED starter should be used with the LED T8.
- Lamp is suitable for 50Hz or 60Hz operation.
- Dimming is not allowed.
- To replace the fluorescent T8 Tube, the existing starter has to be removed together with the tube. A MEGAMAN® starter is provided to work with MEGAMAN® LED T8 Tube.
- This lamp is designed for general lighting service (excluding explosive atmospheres).
- The minimum safety distance from the illuminated object is 0.1m.
- Any constructive change of the luminaire in case of applying retrofit LED lamp shall not be permitted.
- The lamp should be used in dry conditions or in a luminaire that provides protection.
- The lamp is not suitable to be used in emergency luminaires designed for double-capped fluorescent lamp(s).
- This lamp may not be suitable for use in all applications where a traditional fluorescent lamp has been used. In cases of doubt regarding the suitability of the application the manufacturer of this lamp should be consulted.
- The manufacturer accepts no liability for any damages resulting from the misuse of the lamp or when it is used with inappropriate equipment.
- Consult your dealer for any enquiries.
- No modifications of the luminaire which the LED lamp is to be used with are to be made.
- Sensor avoid for any metal objects.

ATTENTIONS

- Instant start is allowed.
- The LED T8 Tube is designed for general lighting service (excluding for example explosive atmosphere).
- The overall energy efficiency and light distribution are determined by the installation design.

PART LIST

LED T8 Tube	x1
MEGAMAN® Starter LA11216	x1

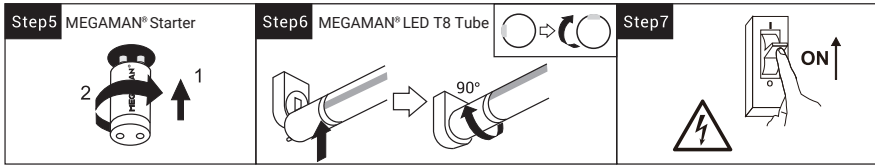
Installation

Step1

Step2 Remove Existing T8 Tube

Step3 Existing Starter

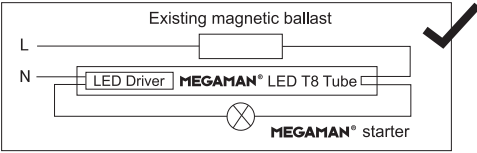
Step4 MEGAMAN® LED T8 Tube



WIRING DIAGRAM

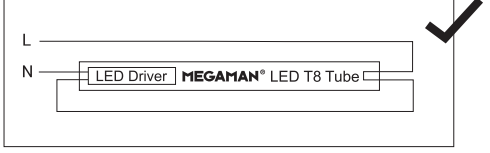
SINGLE ENDED INPUT

If magnetic ballast and starter are available, wiring method is shown below.



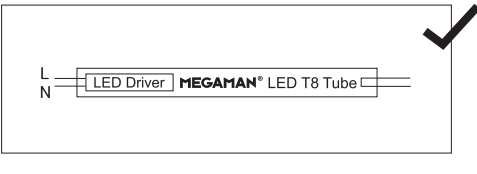
SINGLE ENDED INPUT

If magnetic ballast and starter are NOT available, wiring method is shown below.

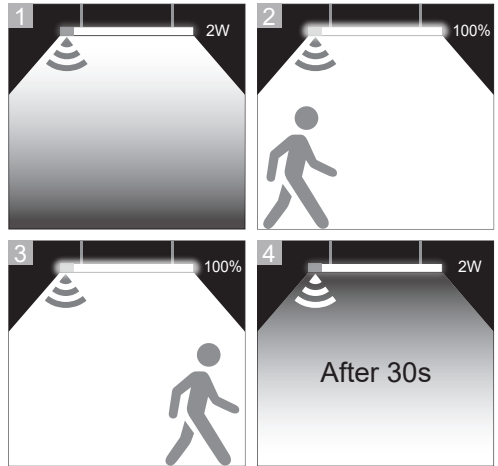
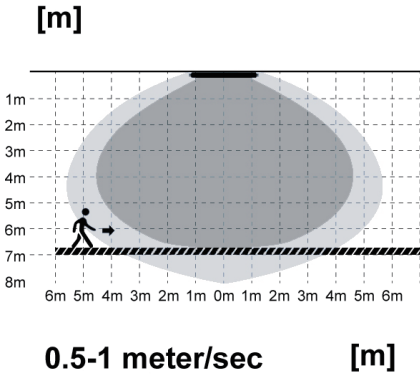


SINGLE ENDED INPUT

If magnetic ballast and starter are NOT available, wiring method is shown below.



SENSING DISTANCE



Correct Disposal of This Product

This marking indicates that this product should not be disposed with other household wastes throughout the EU. To prevent possible harm to the environment or human health from uncontrolled waste disposal, recycle it responsibly to promote the sustainable reuse of material resources. To return your used device, please use the return and collection systems or contact the retailer where the product was purchased. They can take this product for environmental safe recycling.

